



# Technical Access Manual

*UP & DOWN* system hand driven windshield dividers.



## **GENERAL**

Dear customer, thank you for the preference and choice of our products.

This manual is a concise brochure with useful information and installation instructions for electrically retractable partitions, UP & DOWN series systems by Prodromidis Nikolaos & Co. EE.

Please read the following instructions carefully, which are intended for the safe installation and smooth operation of the systems.

## **SAFETY INSTRUCTIONS - USEFUL TIPS**

Be careful when passing cables at the installation site.

Always carry the required personal protective equipment and take all necessary precautions. Do not endanger your individual integrity.

The various components that make up the systems can only be used for the specific purposes for which they are intended.

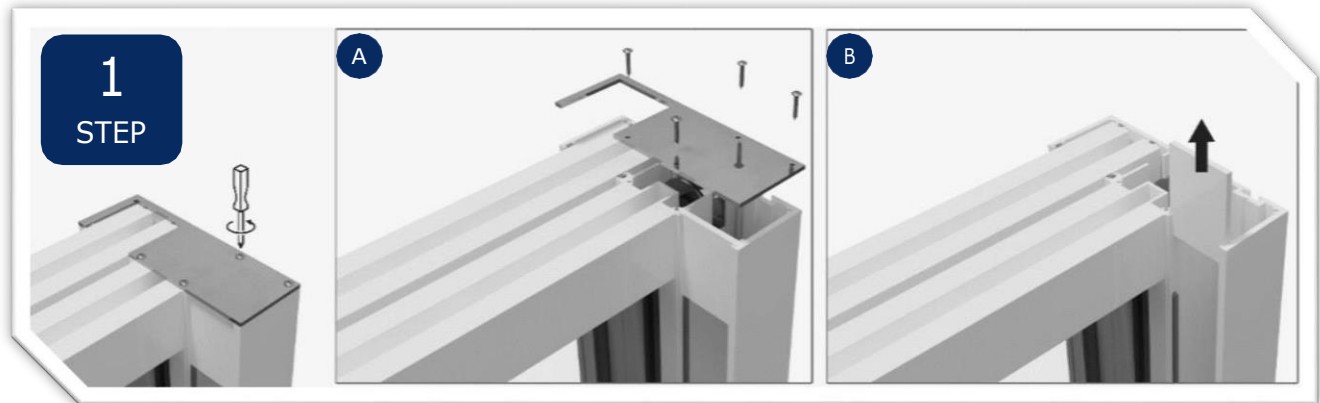
The products are packaged in such a way as to ensure their safe transport. However, special care should be taken when removing them from wooden boxes, pallets or other packaging. Any retainers should be removed first and then carefully transported to a safe flat surface. Special attention should be paid to the current weather conditions. A possible wind can overturn the not yet installed windbreaks.

The products consist of fragile glass and moving - dividing parts of significant volume and weight. Their anchoring at the intended installation site must comply with the applicable safety regulations.

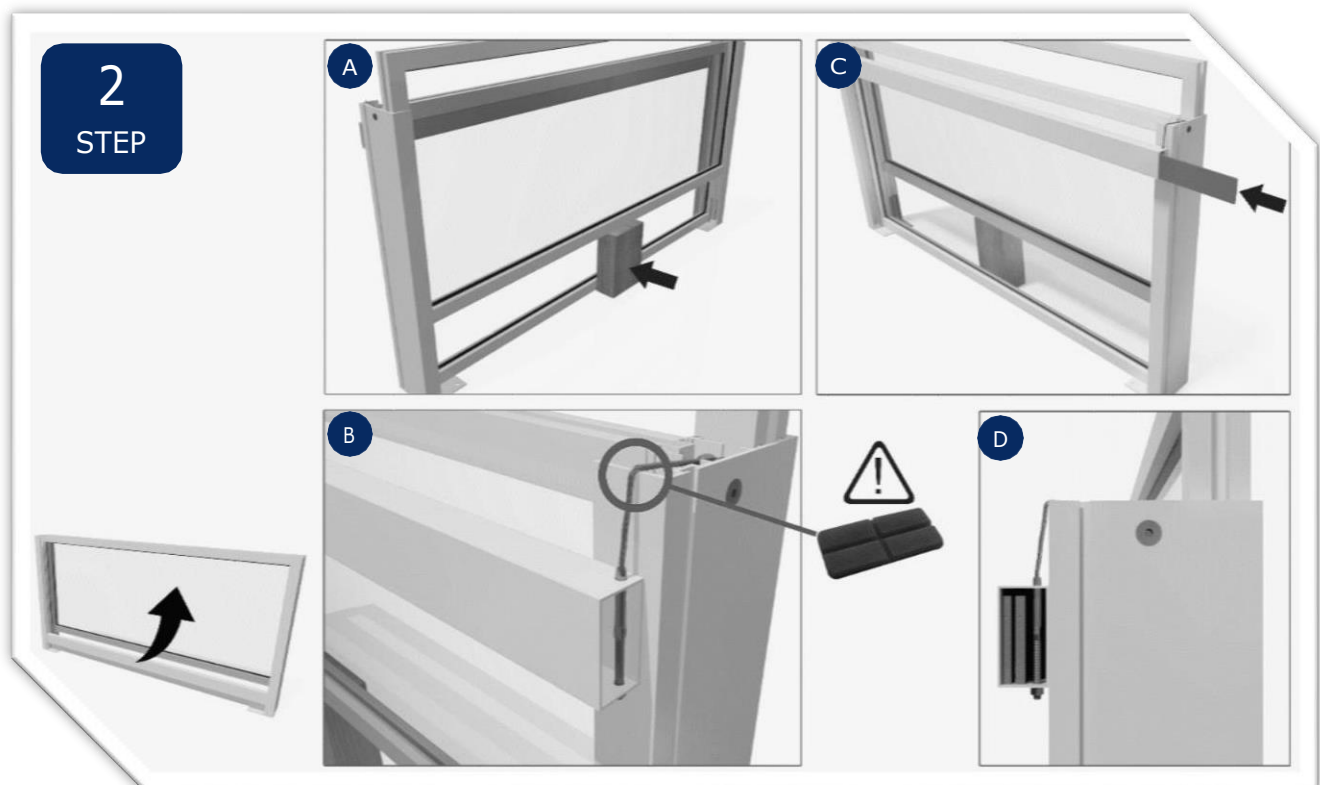
The installation should be done by experienced and specialized staff. The installer should be aware that the company Prodromidis Nikolaos & Co. EE does not bear any responsibility in case of physical or material damage caused by the incorrect application and assembly of its products or non-compliance with appropriate safety measures.

For any question, doubt or remark you have do not hesitate to contact us.

### A. UP & DOWN system installation



**Step 1.** First we remove the plugs from the guides, unscrewing the corresponding screws and then we remove, pulling upwards, the plastics (plexi glass) that are under them.

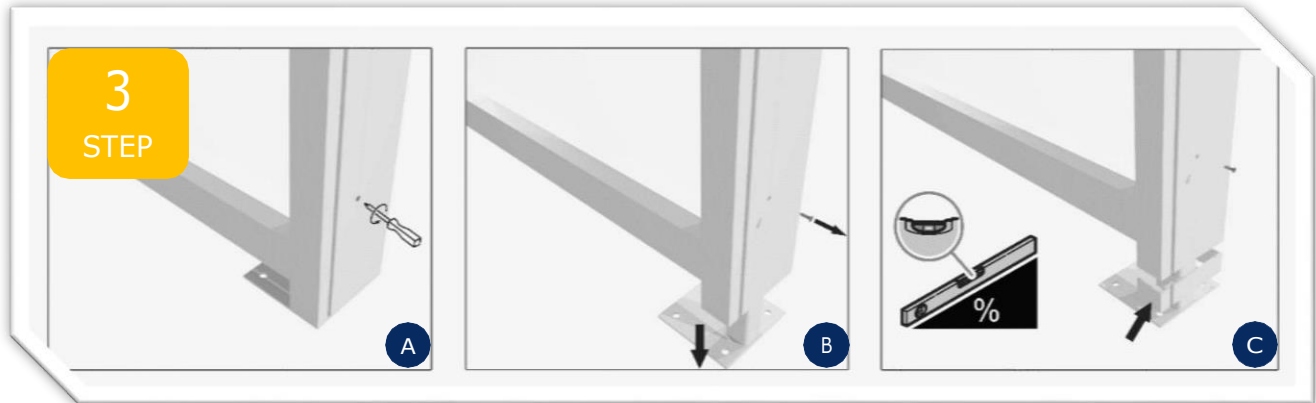


#### Step 2.

- ⇒ Remove the counterweight through the guides carefully, due to its weight.
- ⇒ We pull the moving frame upwards about 15cm, while at the same time we place a block under it to facilitate our subsequent assembly.

Pass the ends (terminals) of the ropes in the open holes of the counterweight. We definitely use a washer and two nuts.

Caution, to avoid any damage to the driver's aluminum, place a protective object (eg plastic glass pad). Fig. B At this point, in case the metal blades are not already passed into the aluminum profile, then we place them one by one with great care. The arrangement of these as well as the ropes can be seen in photo D of step 2.



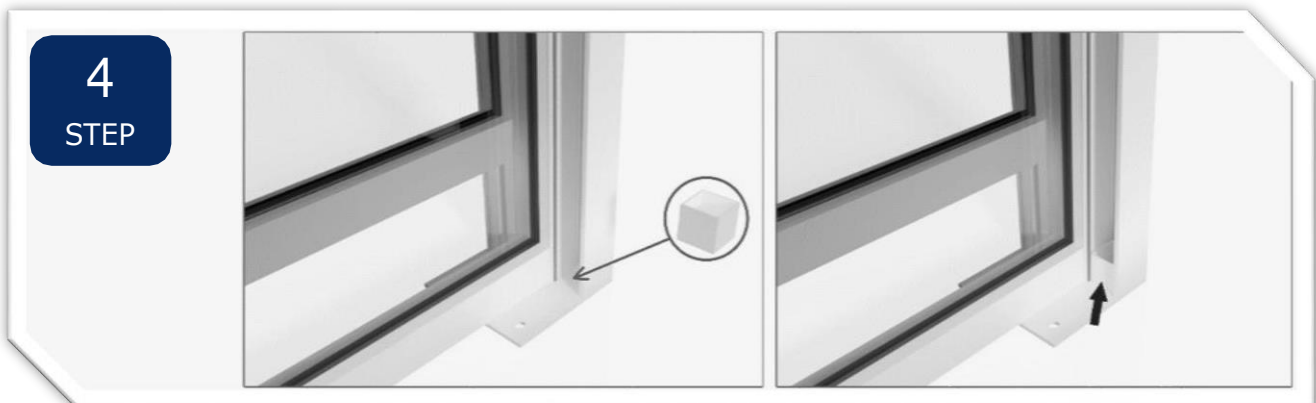
### Step 3. (Sloping ground)

In case there is a difference in the slope of the ground we follow the following procedure:

⇒ Unscrew the side retaining screw of the base.

⇒ Remove the base down.

⇒ We install an additional piece of aluminum profile of the guide, thus determining the correct height for leveling.

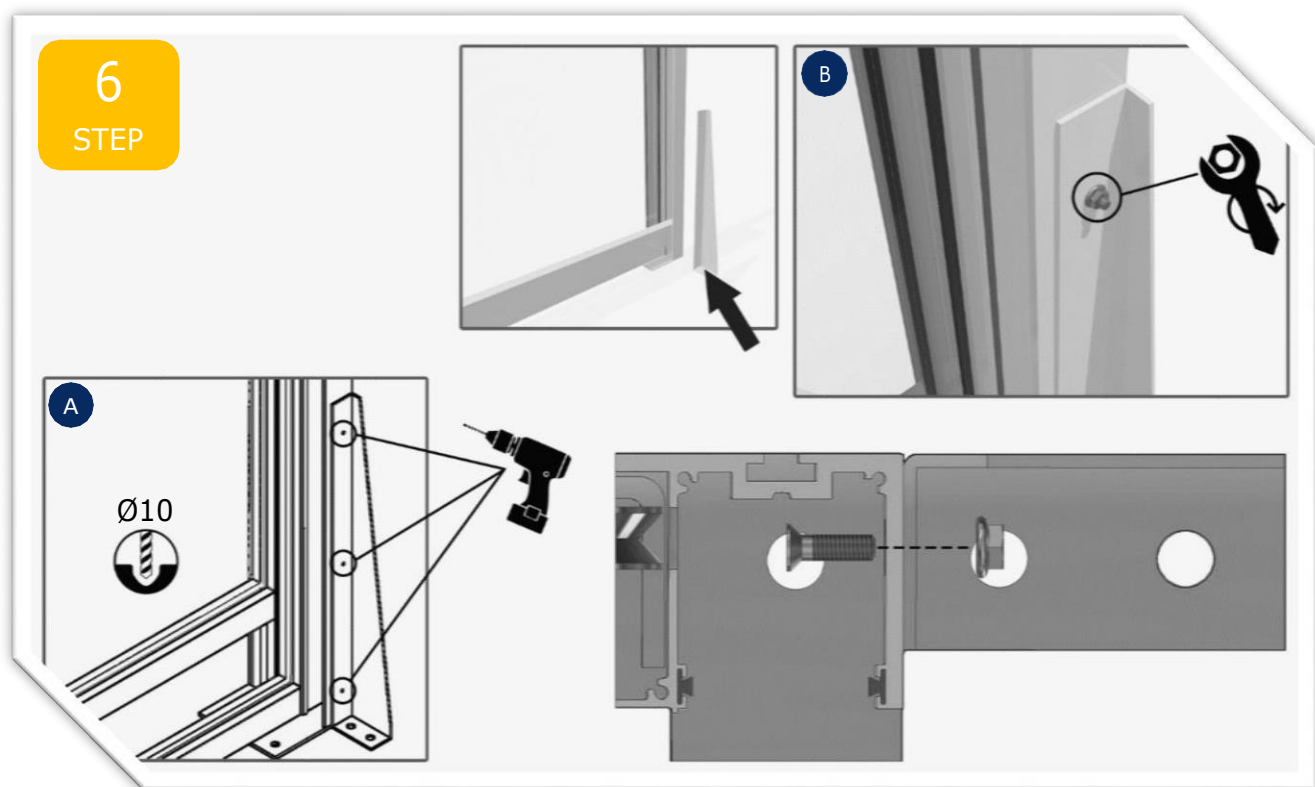


**Step 4.** We install, using silicone glue, the aluminum blocks of dimensions 40x40x40mm in the guides. The heels ensure the balance of the counterweight as well as the moving frame.



**Step 5.** (Optional - Counterweight lock)

In case we want to hold - lock the counterweight, place the appropriate pins after first opening an 8mm hole in the guide. Be careful, the perforation should be done slowly and sequentially so that it does not reach the crystal.

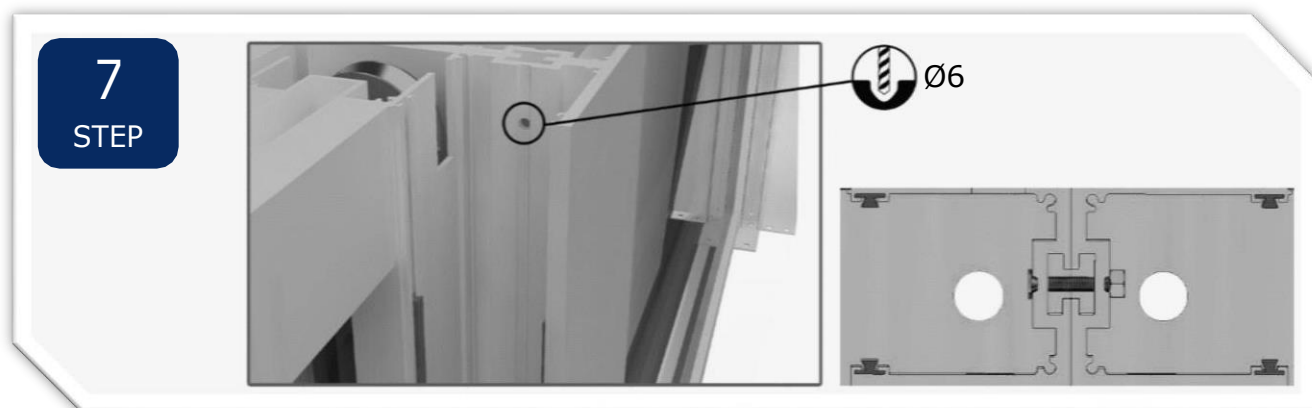


**Step 6.** (Optional - Additional support)

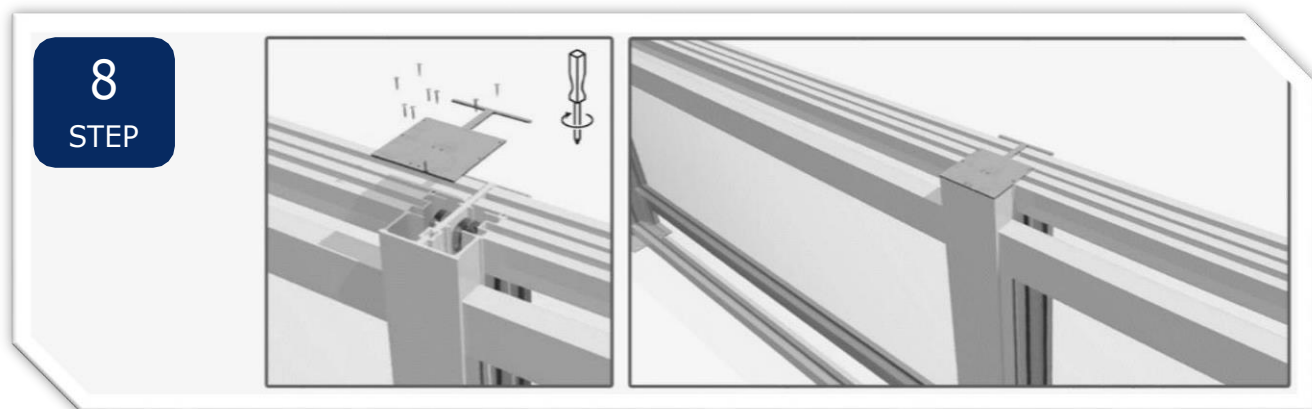
We drill three 10mm holes in the guide which coincide with the existing ones of the struts. Screw with a milling screw placed from the inside out. The nut is on the outside so as not to disturb the movement of the counterweight.

B. Installation of **UP & DOWN** system in row.

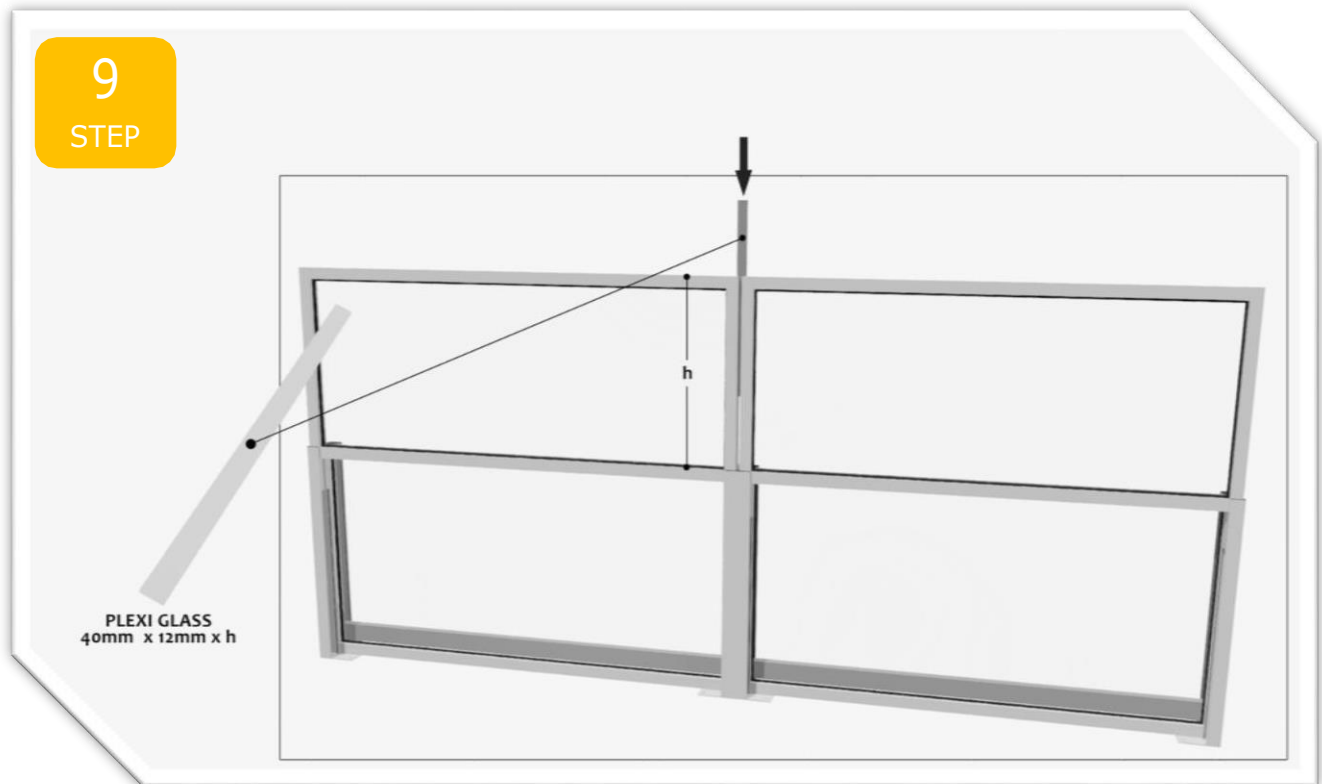
In case the systems are installed sequentially and in sequence, we follow the next two steps.



**Step 7.** To connect them, we open a 6mm hole in the guides from the side on which the counterweight moves exactly in the center and at the height where the plastics are (plexi glass). We use a milling screw and a nut without washer.



**Step 8.** Place the double cap in front of the monastery, screwing with the appropriate screws. The installation of the double plug presupposes the correct and accurate coupling of the systems.



### Step 9. (Optionally)

Finally, to fill the gap created between the two moving frames, we use a special piece made of acrylic plexi glass with dimensions of 40mm x 12mm x h, where h = height of the moving frame. In this way we reduce the inlet of the side air when the systems are in their highest possible position.

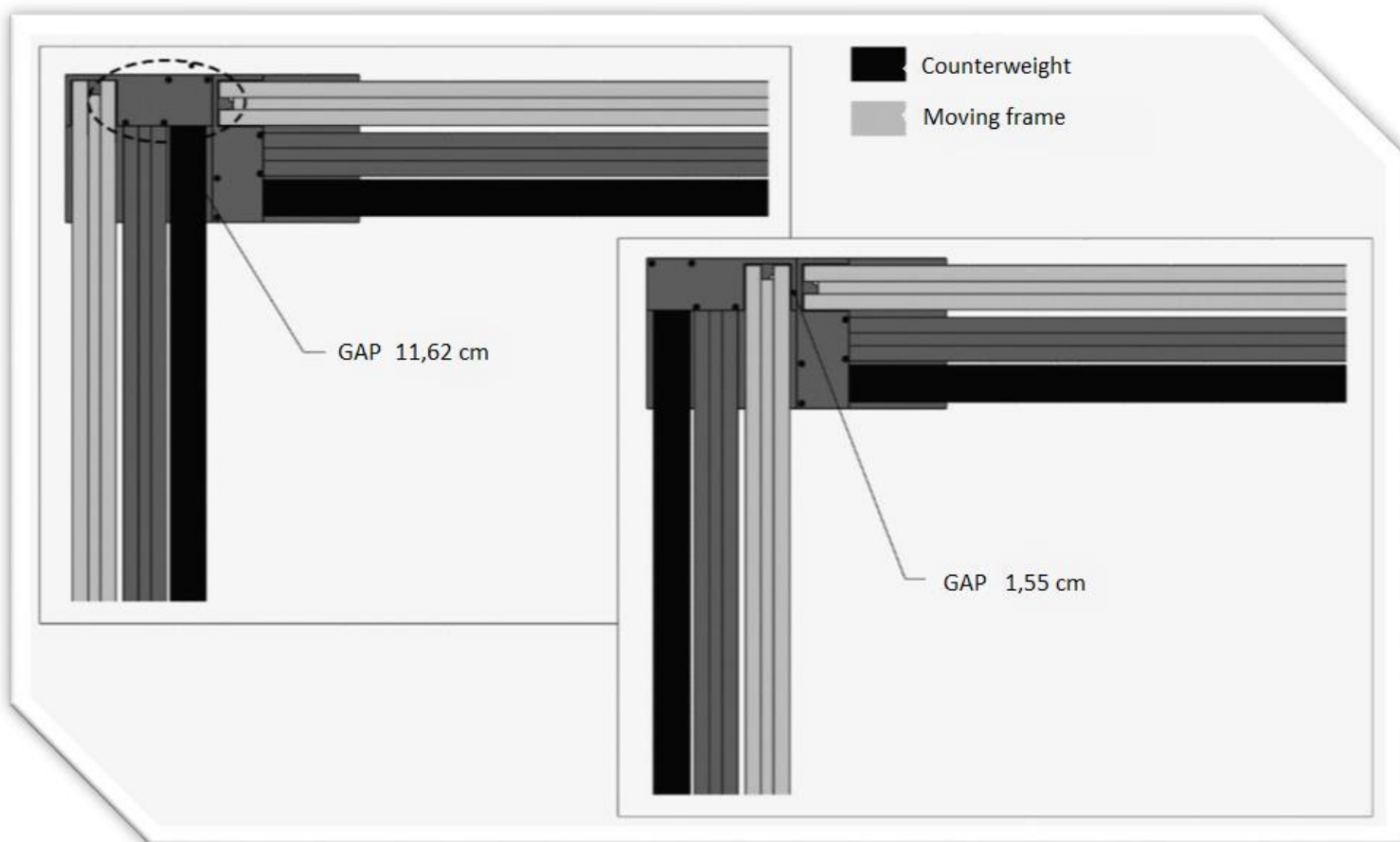
Caution: Do not use glue, mastic or any other means of restraint-sealing, as it is a removable component.

### C. Installation of **UP & DOWN** system in corner.

If two systems are placed at an angle, an inevitable gap is created between the two moving frames.

So if the counterweights are placed both from the inside of the systems, then there will be a gap of 11.62 cm. To avoid this, preferably, we choose the opposite arrangement so that the gap is reduced to 1.55cm.

The following figure shows the two different ways of installing the systems.





Prodromidis Nikolaos & Co. EU

Pogradec 21 & Irimi 11 Peristeri

2105786700

[info@prodromidis.gr](mailto:info@prodromidis.gr)

[www.prodromidis.gr](http://www.prodromidis.gr)

